

MF 423-3-3D-BB SERIES

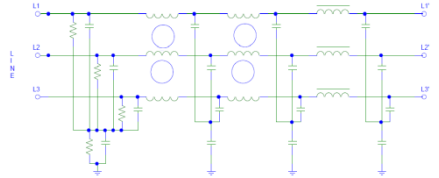


Features

- Chassis Mount/Panel 3 Phase Filter 3 Wire
- General Purpose
- High Current Rating
- Compact
- Excellent Performance
- Bus Bar Termination

Technical Specification

- Maximum Operating Voltage: 440/520*/600* VAC
- Operating Frequency: 50/60Hz
- Rated Current: 300A to 2500A
- High Potential test voltage:
 - L to G 2120VAC FOR 250V
 - L to L 1414VDC FOR 250V
- Overload Capability: 6 x Rated current for 8sec
- Temperature Range :-25 °C to 85 °c
- Earth Leakage Current : 1 mA max
(Also available in low leakage Current)



Application

- For UPS, Special purpose machines.
- Elevators
- CNC Machines
- HVAC
- Drives
- AC/DC Drives
- SCR Drives

Presentation

Aluminium

Mounting

Panel/Chassis Mount

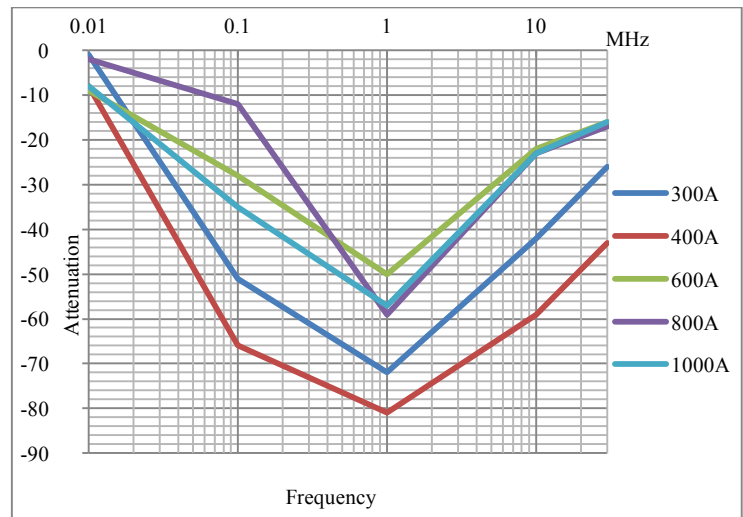
Termination

Bus Bar

How to Order

Part Number	Current Rating (A)	Termination
MF 423-3-3D BB – 300A	300	Bus Bar
MF 423-3-3D BB – 320A	320	Bus Bar
MF 423-3-3D BB – 400A	400	Bus Bar
MF 423-3-3D BB – 450A	450	Bus Bar
MF 423-3-3D BB – 500A	500	Bus Bar
MF 423-3-3D BB – 550A	550	Bus Bar
MF 423-3-3D BB – 600A	600	Bus Bar
MF 423-3-3D BB – 700A	700	Bus Bar
MF 423-3-3D BB – 800A	800	Bus Bar
MF 423-3-3D BB – 1000A*	1000	Bus Bar
MF 423-3-3D BB – 1600A*	1600	Bus Bar
MF 423-3-3D BB – 2500A*	2500	Bus Bar

Insertion Loss



*Not covered under CSA / C-US/NEMKO

** For Customised filter Contact our sales department